

TERMINAL CONNECTOR SCALE PIN LUG

Manufactured with one or two fixing pins and lug with one or two holes.

Practicality, facility and speed during the installation process.
Waive the use of special tools.

This is a product used by installers to connect cables in several electrical contacts; electrical panels in general, cable splices, etc.

To fix the scale pin, use the following options:

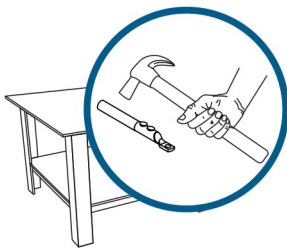
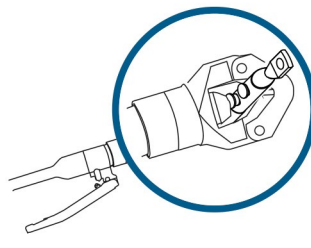


TABLE WITH HAMMER



OVERHEAD DISTRIBUTION

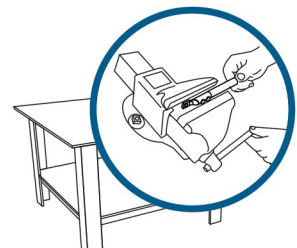
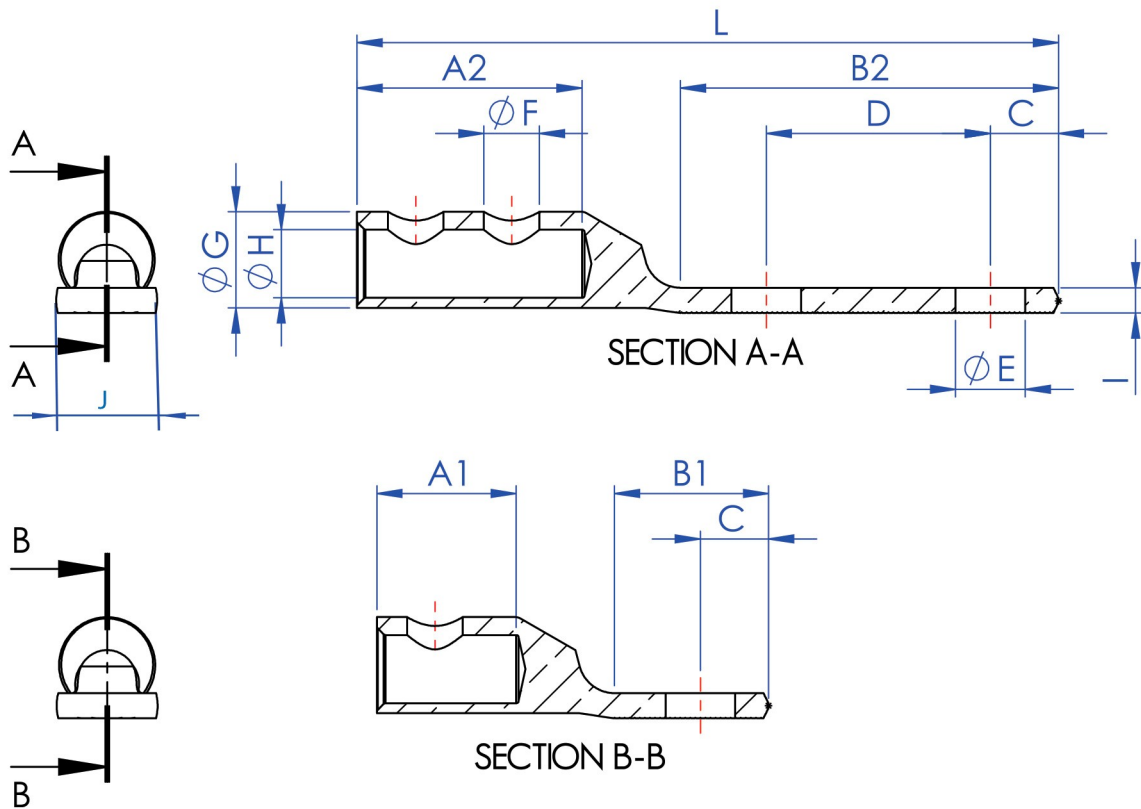


TABLE WITH VISE

MAIN BENEFITS

- It can be applied in copper cable from 10mm² to 240mm²;
- Cold forming process in tinned electrolytic copper;
- Conductivity improvement;
- Corrosion resistant.



A1 - 1 PIN
A2 - 2 PINS

B1 - 1 HOLE
B2 - 2 HOLES

SECTION	A1 ± 0.50	A2 ± 0.50	B1 ± 0.50	B2 ± 0.50	C ± 0.50	D ± 0.50	E ± 0.20	F	G ± 0.10	H ± 0.20	I ± 0.10	J ± 0.50	L ± 2.00 (B1 or B2)
10mm ²	25.00	*	12.00	26.00	5.00	14.00	5.50	4.40	7.93	4.50	1.50	8.00	42.00 or 56.00
16mm ²	25.00	*	13.50	29.50	6.00	16.00	5.50	5.20	9.52	5.50	2.00	10.00	44.00 or 60.00
25mm ²	25.00	*	16.50	32.50	6.00	16.00	6.50	6.20	11.11	7.00	2.00	11.00	51.00 or 67.00
35mm ²	*	35.00	18.00	37.00	8.00	18.00	8.50	7.20	12.70	8.50	2.50	13.00	62.00 or 80.00
50mm ²	*	40.00	19.60	42.00	9.00	22.00	10.50	8.50	14.28	9.90	3.50	15.00	72.00 or 94.00
70mm ²	*	40.00	22.60	67.00	10.00	44.40	10.50	9.20	17.46	11.50	4.00	18.00	78.00 or 122.40
95mm ²	*	45.00	22.60	67.00	10.00	44.40	10.50	11.00	19.05	13.50	5.00	20.00	87.00 or 131.40
120mm ²	*	45.00	28.60	73.00	13.50	44.40	13.60	11.00	22.22	15.00	5.00	22.00	86.00 or 130.40
150mm ²	*	50.00	28.60	73.00	13.50	44.40	13.60	13.00	23.81	17.50	6.00	24.00	100.00 or 144.40
185mm ²	*	60.00	28.60	73.00	13.50	44.40	13.60	13.00	27.10	18.50	7.00	27.00	114.00 or 158.40
240mm ²	*	60.00	35.60	80.00	17.00	44.40	13.60	17.00	30.00	21.30	8.00	30.00	128.00 or 172.40