

**TORQUIMETRIC
SCREW WITH
PIVOT TIP**

TERMINAL CONNECTOR TORQUIMETRIC LUG

Manufactured with one or two fixing screws and lug with one or two holes.

Practicality, facility and speed during the installation process.

Waive the use of special tools!



STRETCH MARKS
Better electrical contact.

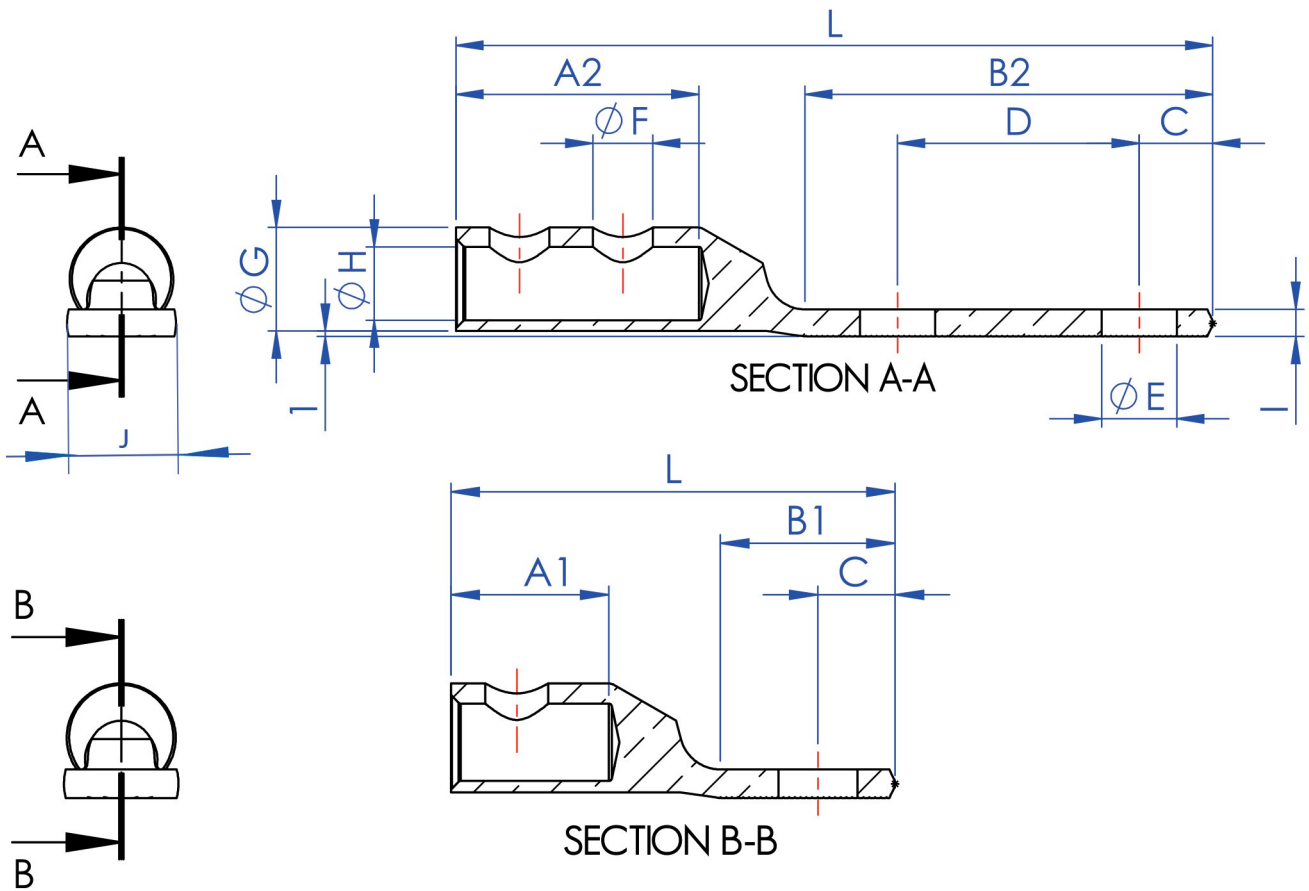


Do not damage the cable.
The screw tip can be applied
with copper cable.

This is a product used by installers to connect cables at various electrical contact points, it can also be used in electrical panels in general, cable splicing, etc

MAIN BENEFITS

- *It can be applied in copper cables from 16 mm² to 240mm²*
- *Cold forming process in tinned electrolytic copper;*
- *Conductivity improvement;*
- *Corrosion resistant.*



A1 - 1 SCREW
A2 - 2 SCREWS

B1 - 1 HOLE
B2 - 2 HOLES

SECTION	A1 ±0.50	A2 ±0.50	B1 ±0.50	B2 ±0.50	C ±0.50	D ±0.50	E ±0.20	F	G ±0.10	H ±0.20	I ±0.10	J ±0.50	L ±(B1 or B2)
16mm ²	25.00	*	13.50	29.50	6.00	16.00	5.50	M6	11.10	5.50	3.00	10.00	47.00 or 63.00
25mm ²	25.00	*	16.50	32.50	6.00	16.00	6.50	M7	12.70	7.00	3.50	11.00	51.00 or 67.00
35mm ²	*	35.00	18.00	37.00	8.00	18.00	8.50	M8	14.28	8.50	3.80	13.00	63.00 or 82.00
50mm ²	*	40.00	19.60	42.00	9.00	22.00	10.50	M8	17.46	9.90	4.60	15.00	70.00 or 92.40
70mm ²	*	40.00	22.60	67.00	10.00	44.40	10.50	M10	19.05	11.50	5.80	18.00	73.00 or 117.40
95mm ²	*	45.00	22.60	67.00	10.00	44.40	10.50	M12	22.22	13.50	6.70	20.00	89.00 or 133.40
120mm ²	*	45.00	28.60	73.00	13.50	44.40	13.60	M12	23.81	15.00	7.80	22.00	95.00 or 139.40
150mm ²	*	50.00	28.60	73.00	13.50	44.40	13.60	M14	27.10	17.50	8.40	24.00	102.00 or 146.40
185mm ²	*	60.00	28.60	73.00	13.50	44.40	13.60	M14	30.00	18.50	10.50	27.00	113.00 or 157.40
240mm ²	*	60.00	35.60	80.00	17.00	44.40	13.60	M18	32.00	21.30	9.00	30.00	123.00 or 167.40



ISO 9001
**INDEL
BAURU**
Protection for
Energy Distribution

Sales and Factory

Joaquim Marques de Figueiredo street, 2-79

Industrial District I - Bauru-SP - Brazil - Zip Code 17034-290

Ph. +55 (14) 3281-7070

vendas@indelbauru.com.br

www.indelbauru.com